

Scribner school opens doors last time

By DONITA POPPE

Scribner Correspondent
 SCRIBNER — School District 83 northeast of Scribner will open its doors one more time Saturday, not to children going to school, but for the sale of the building and its contents.

The 30-by-40 foot building and miscellaneous items including desks, encyclopedias, a piano, slates, and other items will be auctioned at 1 p.m.

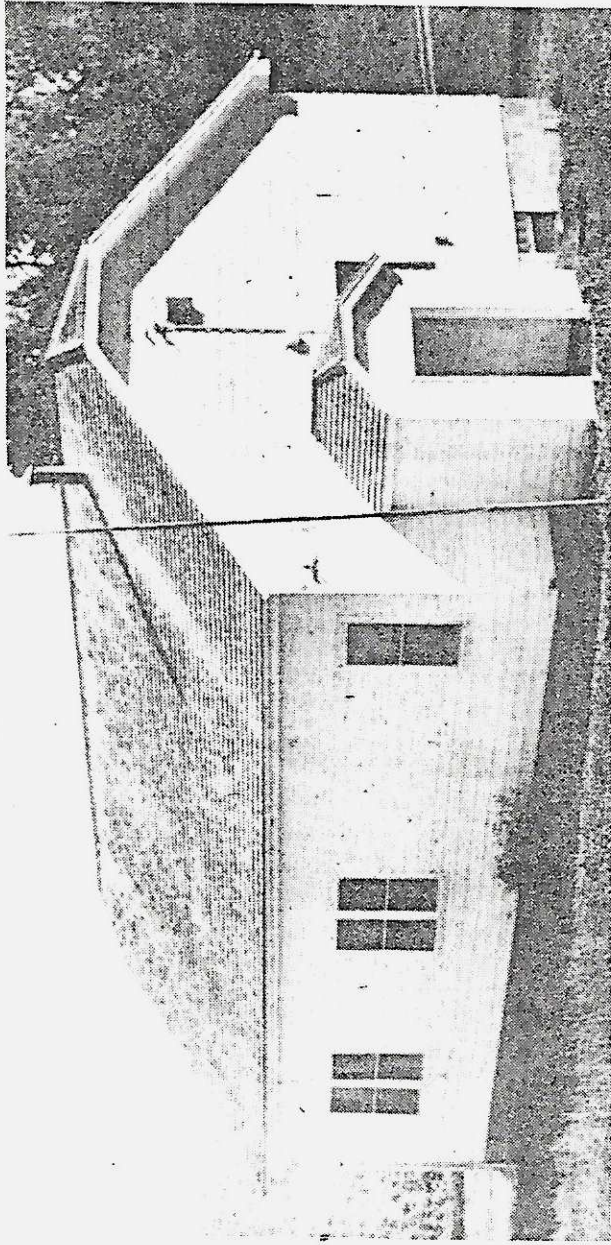
The district closed classes in spring 1978, and is being dissolved this year.

Dodge County School District 83 was established in 1900, when A.H. Von Seggern agreed to give the district an acre of farmland to be used as long as there was a school there.

Before 1900 the area children attended School District 50. Then, due to the growing population of District 50 and the long distances from home to school, District 83, informally known as Shady Dell, was formed.

On April 12, 1900, the first school board meeting was held in the home of John Glissman. Elected to the first board of directors were D.G. Meyer, director, and G.H. Von Seggern, moderator. Later, on June 25, Christ Pfeiffer was elected treasurer, according to Dodge County Supt. of Schools Lucian Fuhrmeister.

In 1901 Nancy Christy, the daughter of Scribner lawyer,



School District 83 northeast of Scribner will open its doors for the last time Saturday when the building and its contents are auctioned at 1

p.m. Informally known as Shady Dell, the school ended classes in Spring 1978. (Tribune Photo by Donita Poppe)

help carry water and gather wood for the stove.

Poppe also said he remembers well the spankings and the plumb tree branch used as a switch.

In its early years, the school's classes were divided by subject rather than grade, Poppe said. One student might be in a third-grade math class and a sixth-grade reading class and little would be thought about it.

Mrs. Bill Pfeiffer, who taught there in the 1920s, said she received a salary of \$90 a month. During the depression though, she received \$35 a month, she said. Throughout most of that time, teachers boarded with families in the district.

In 1955 the current school building was constructed at the same site. It was the first time the school had indoor plumbing and automatic heating.

In 1971-72 the district voted to send its junior high students to Scribner Public School, but kept the kindergarten through sixth grades at the rural school.

Six years later, enrollment had declined until there were only six students belonging to three families there. That was the school's last year, and according to state law, the district must be resolved after a waiting period of two years. Persons wanting more information about items to be auctioned may call Mr. Pribnow of Scribner, 664-3297.

Other subjects at the school were reading, writing, arithmetic, and combined history and geography. Later agriculture and civil government were added.

John Poppe, a student at the time, remembered that the class year ran from the first of September to mid-June. He said all the boys had to work before and after school on the farms, and at school they had to

classroom kept the children warm, at least those sitting nearest the inside.

Records show enrollment in 1905 was 33, although it fluctuated during the year because the boys had to help with the farm in spring and fall.

Many members of the community spoke German then, and one of the students' first classes was English.